



## Property Information

Order Number: 23050800247p  
 Date Completed: May 10, 2023  
 Project Number:  
 Project Property: Barrett Solar  
 Barrett Solar Point TX  
 Coordinates:  
 Latitude: 32.9537096  
 Longitude: -95.90505659  
 UTM Northing: 3649902.1418 Meters  
 UTM Easting: 228432.222436 Meters  
 UTM Zone: UTM Zone 15S  
 Elevation: 508.94 ft  
 Slope Direction: NE

Topographic Information.....2  
 Hydrologic Information.....18  
 Geologic Information.....32  
 Soil Information.....38  
 Pipeline and Survey Map.....50  
 Wells and Additional Sources.....56  
 Summary.....79  
 Detail Report.....82  
 Radon Information.....89  
 Appendix.....90  
 Liability Notice.....93

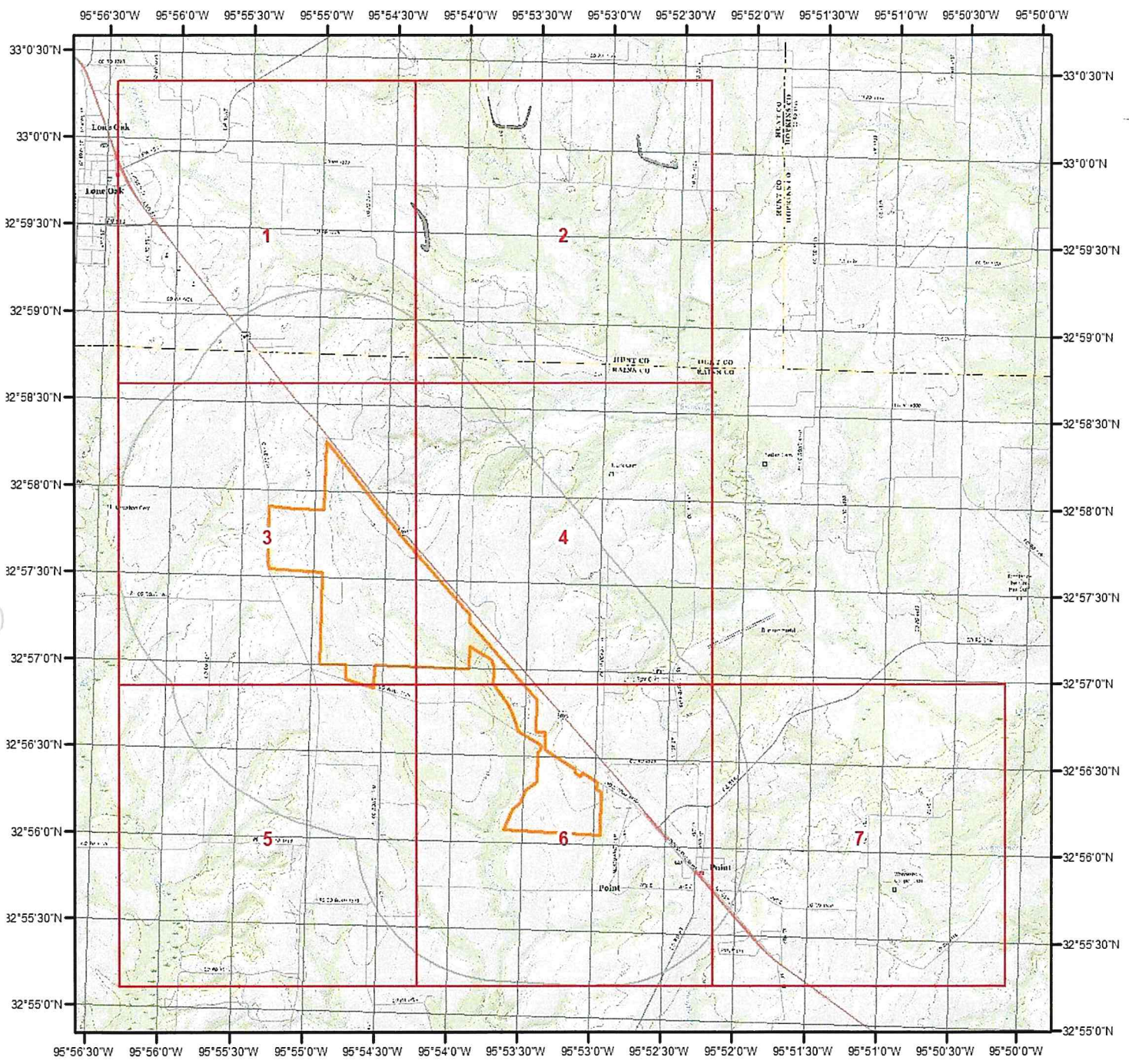
The ERIS *Physical Setting Report - PSR* provides comprehensive information about the physical setting around a site and includes a complete overview of topography and surface topology, in addition to hydrologic, geologic and soil characteristics. The location and detailed attributes of oil and gas wells, water wells, public water systems and radon are also included for review.

The compilation of both physical characteristics of a site and additional attribute data is useful in assessing the impact of migration of contaminants and subsequent impact on soils and groundwater.

### Disclaimer

This Report does not provide a full environmental evaluation for the site or adjacent properties. Please see the terms and disclaimer at the end of the Report for greater detail.

# Topographic Information



**Current USGS Topo (2019)**

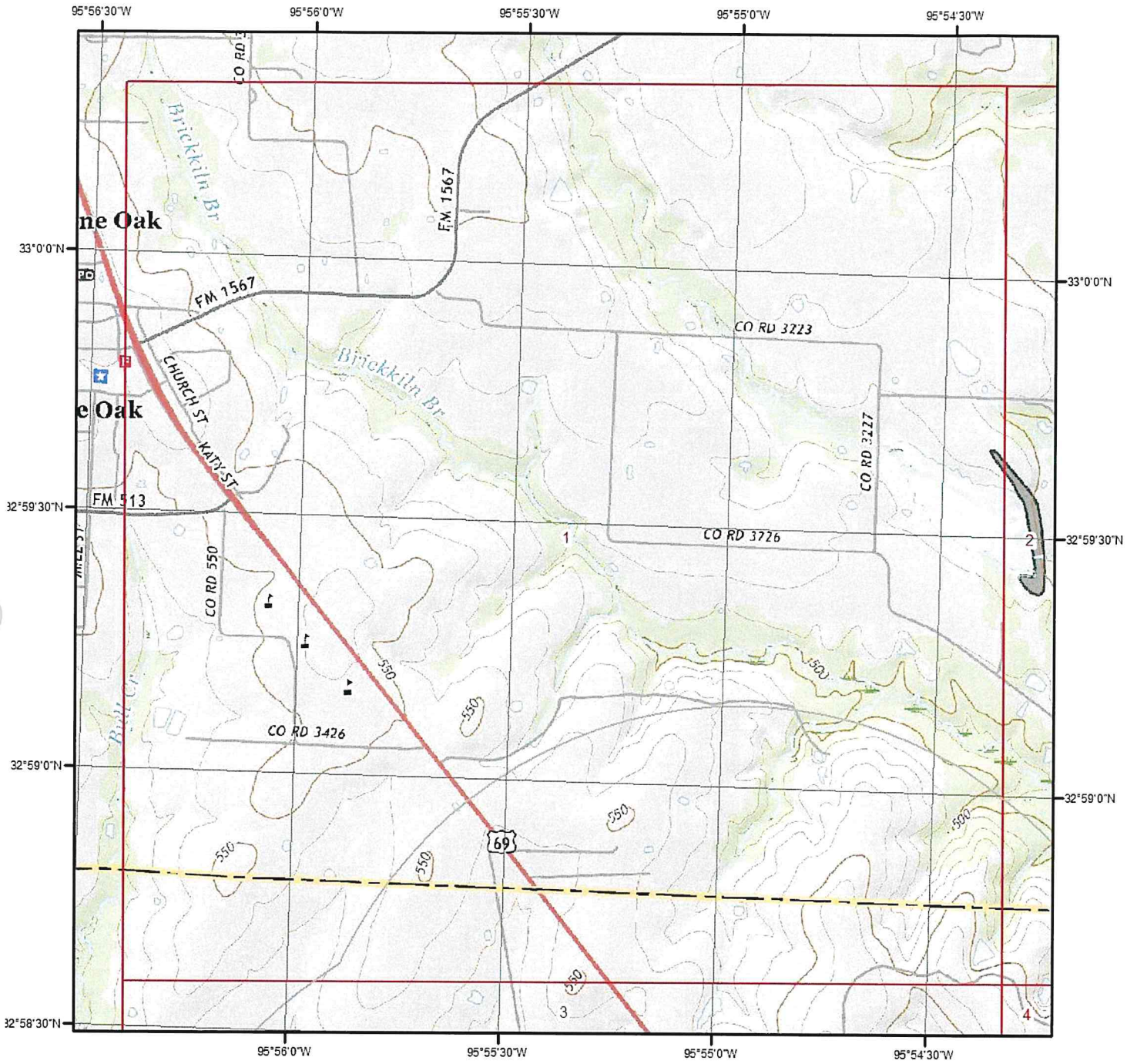


**Quadrangle(s): Greenville SE,TX; Miller Grove,TX; Emory South,TX; Ables Springs,TX; Emory North,TX; Lone Oak North,TX; Lone Oak South,TX**



Source: USGS 7.5 Minute Topographic Map

# Topographic Information



Current USGS Topo - Page 1

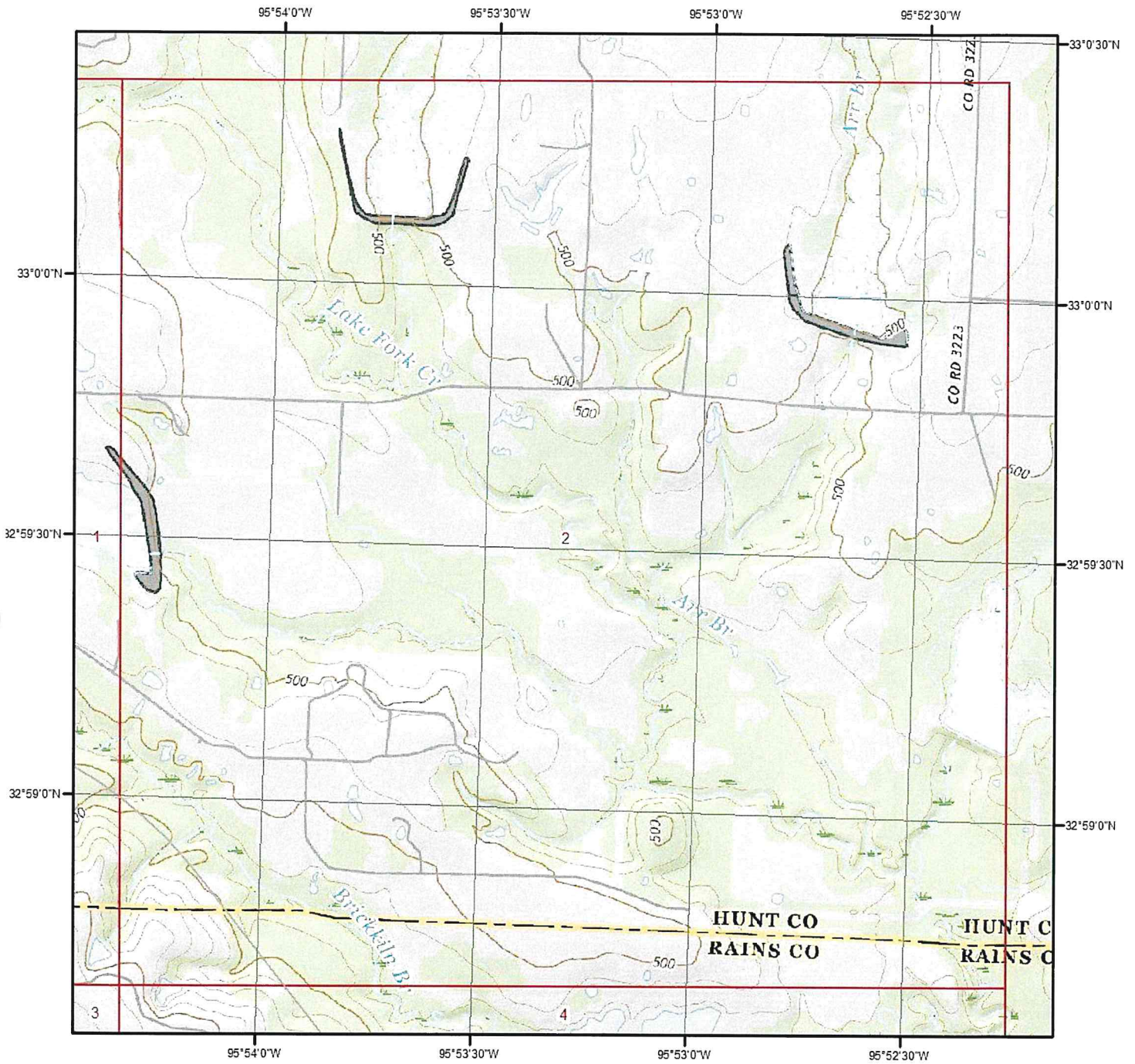


Quadrangle(s): Lone Oak North, TX; Lone Oak South, TX

Source: USGS 7.5 Minute Topographic Map



# Topographic Information



## Current USGS Topo - Page 2

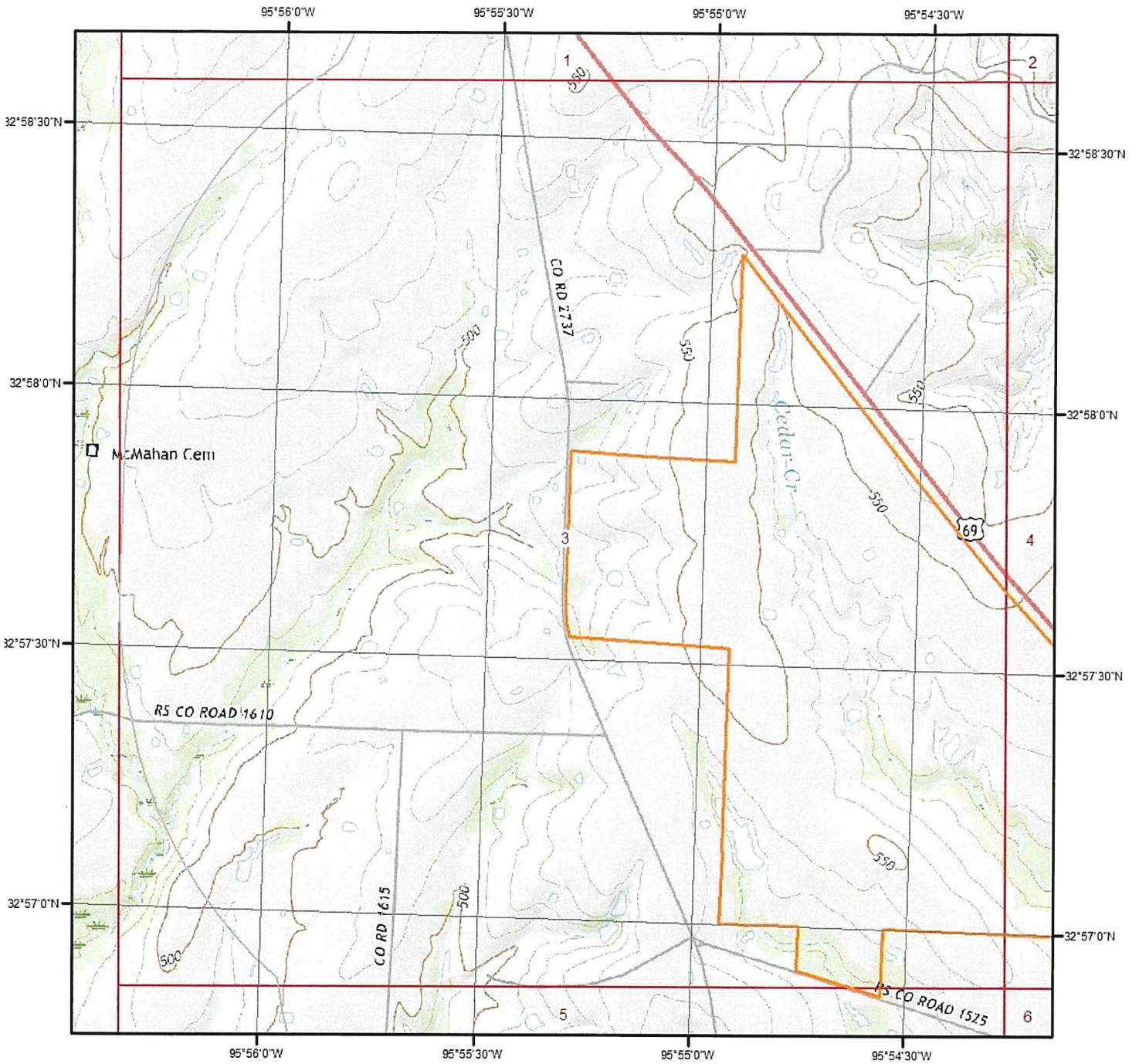


Quadrangle(s): Miller Grove, TX; Emory North, TX; Lone Oak North, TX; Lone Oak South, TX

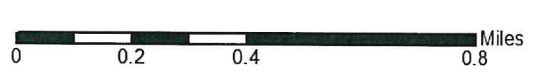
Source: USGS 7.5 Minute Topographic Map



# Topographic Information



**Current USGS Topo - Page 3**

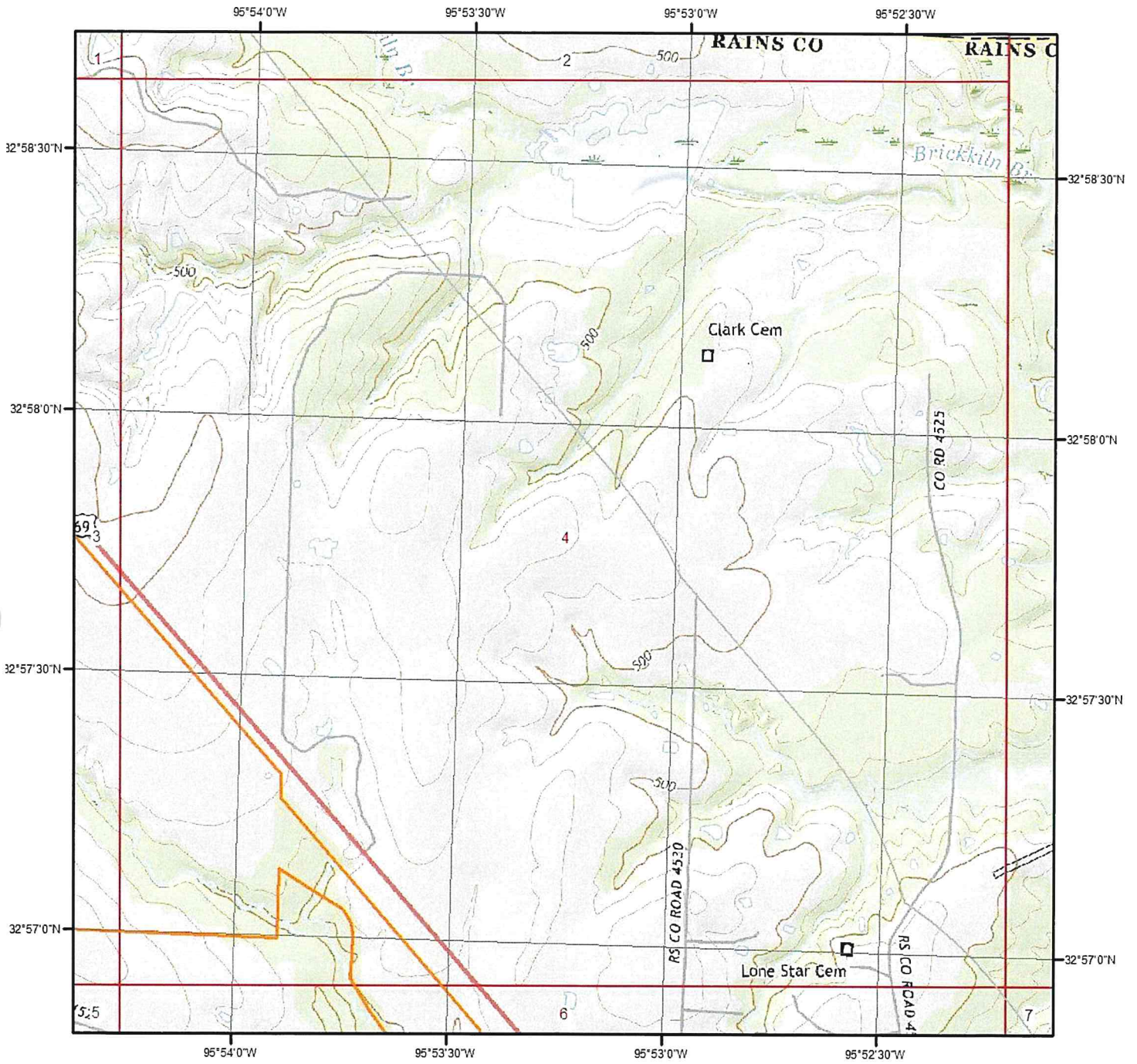


**Quadrangle(s): Lone Oak South, TX**

Source: USGS 7.5 Minute Topographic Map



# Topographic Information



**Current USGS Topo - Page 4**

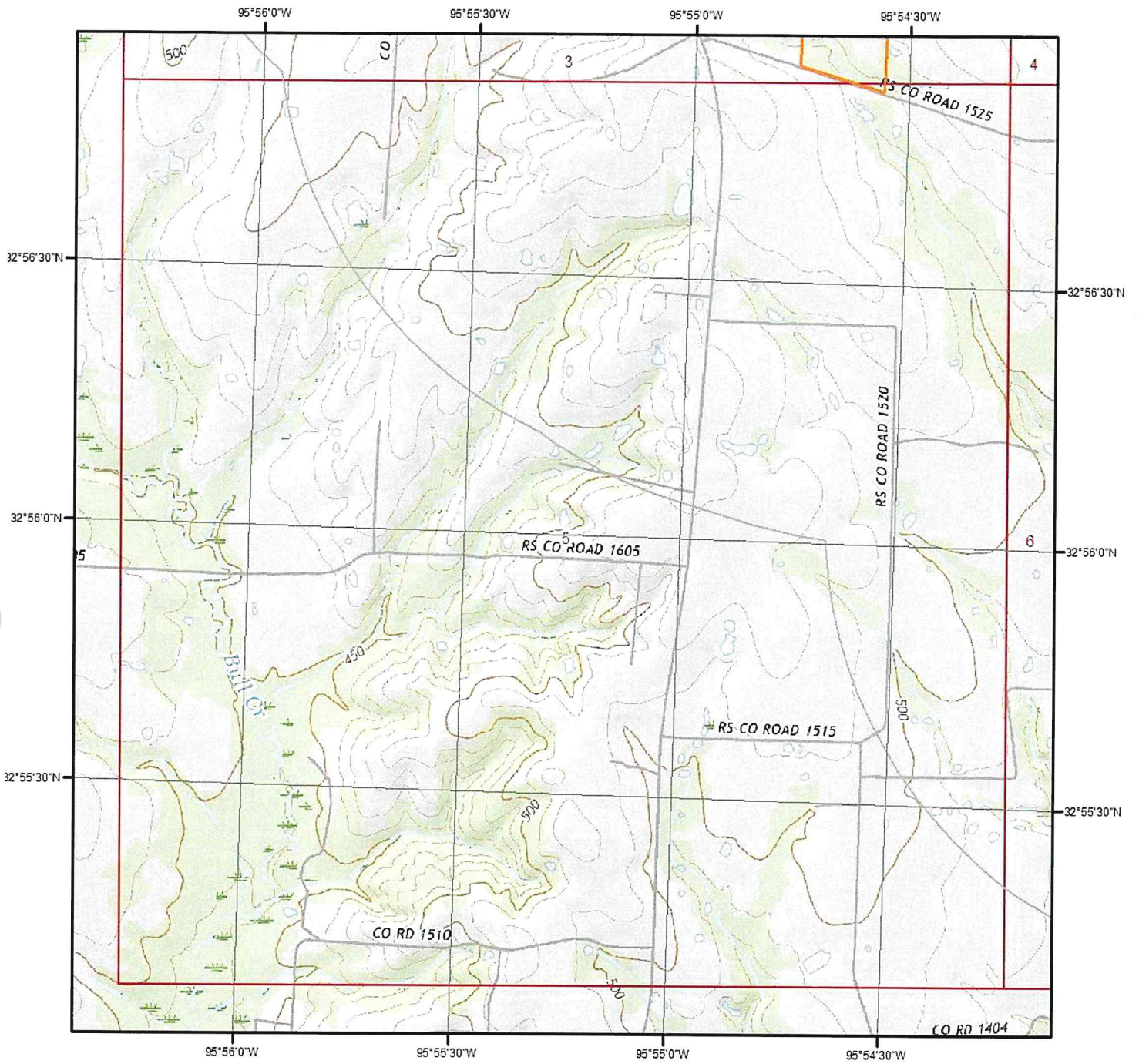


**Quadrangle(s): Emory North, TX; Lone Oak South, TX**

Source: USGS 7.5 Minute Topographic Map



# Topographic Information



**Current USGS Topo - Page 5**

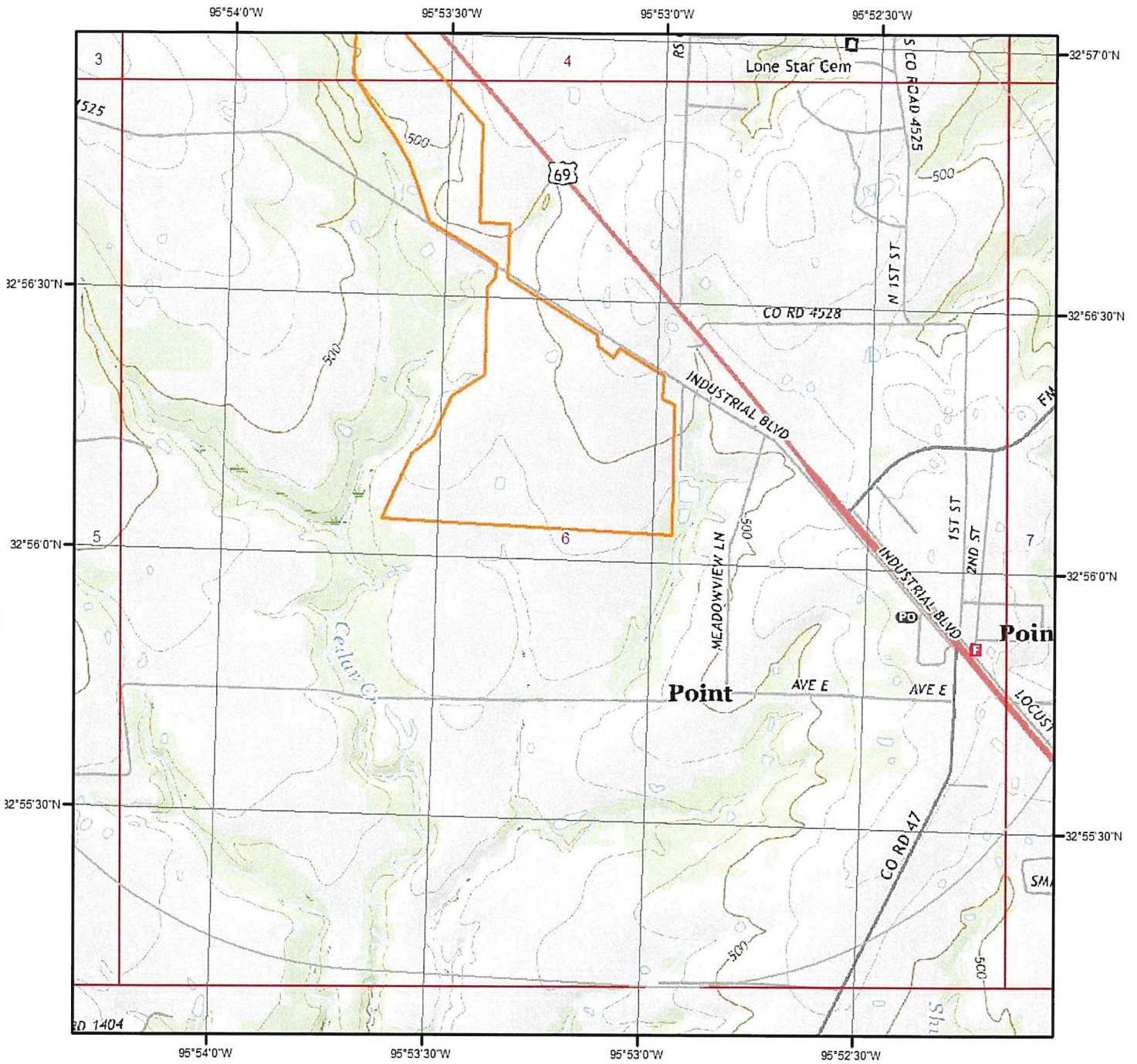


**Quadrangle(s): Lone Oak South, TX**

Source: USGS 7.5 Minute Topographic Map



# Topographic Information



**Current USGS Topo - Page 6**

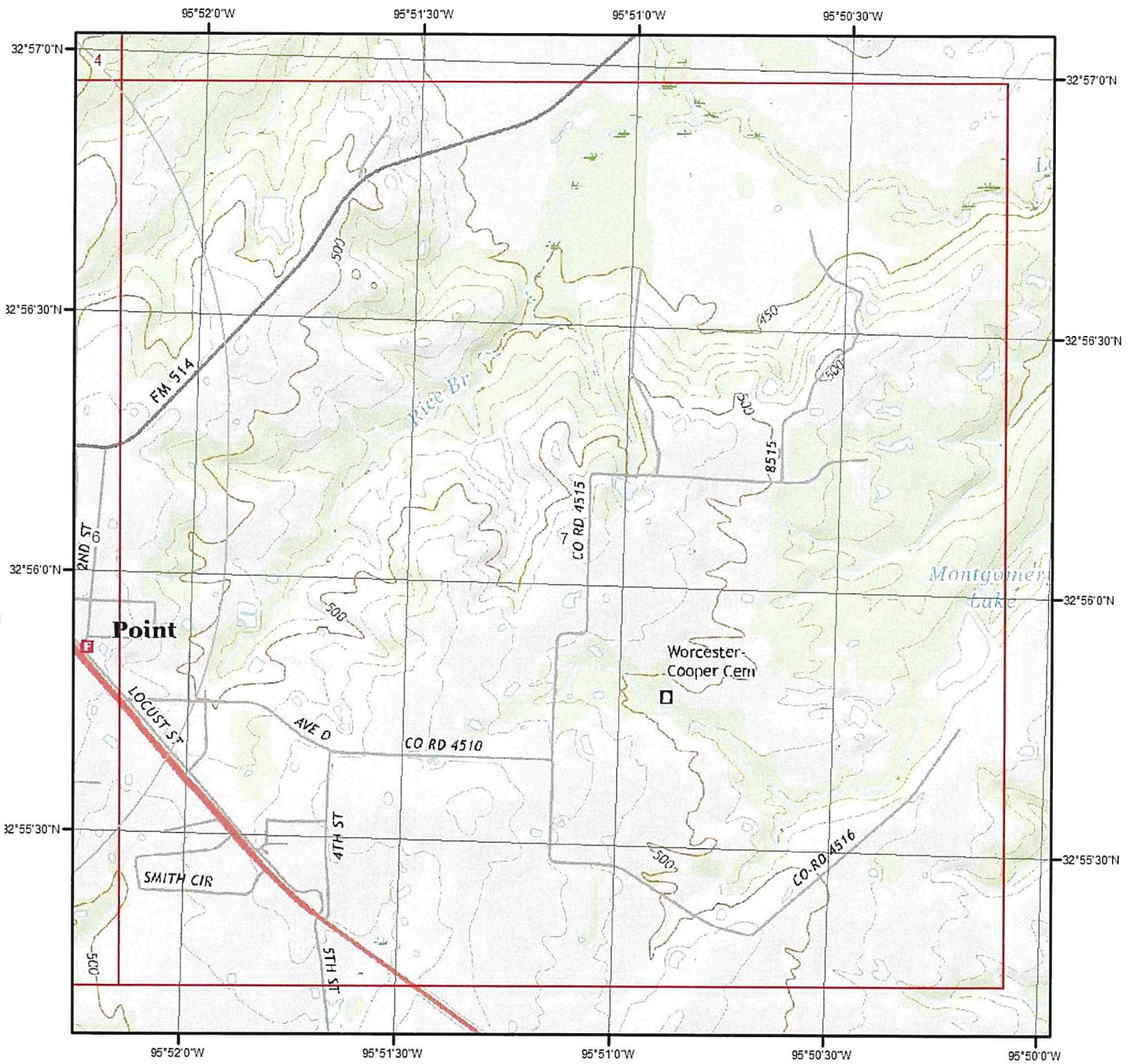


**Quadrangle(s): Emory North, TX; Lone Oak South, TX**

Source: USGS 7.5 Minute Topographic Map



# Topographic Information



**Current USGS Topo - Page 7**

**Quadrangle(s): Emory North, TX**

Source: USGS 7.5 Minute Topographic Map

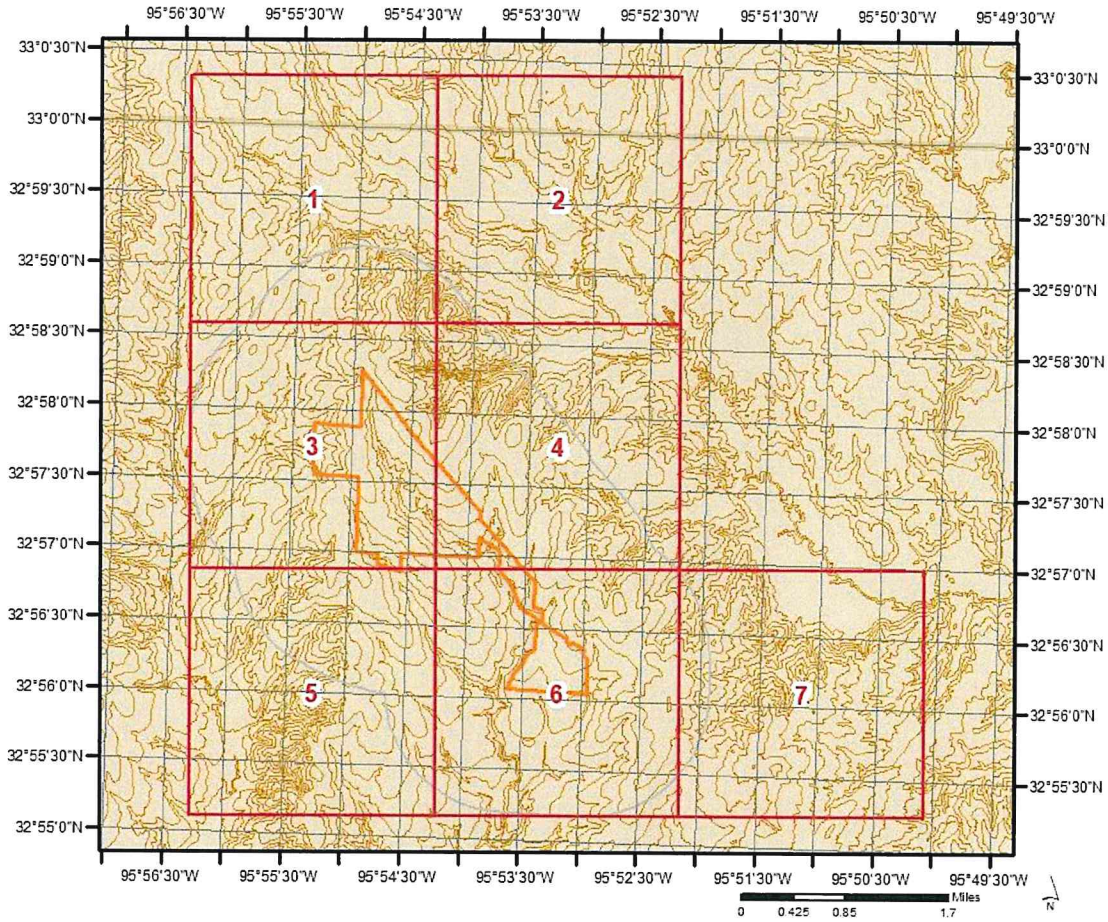


# Topographic Information

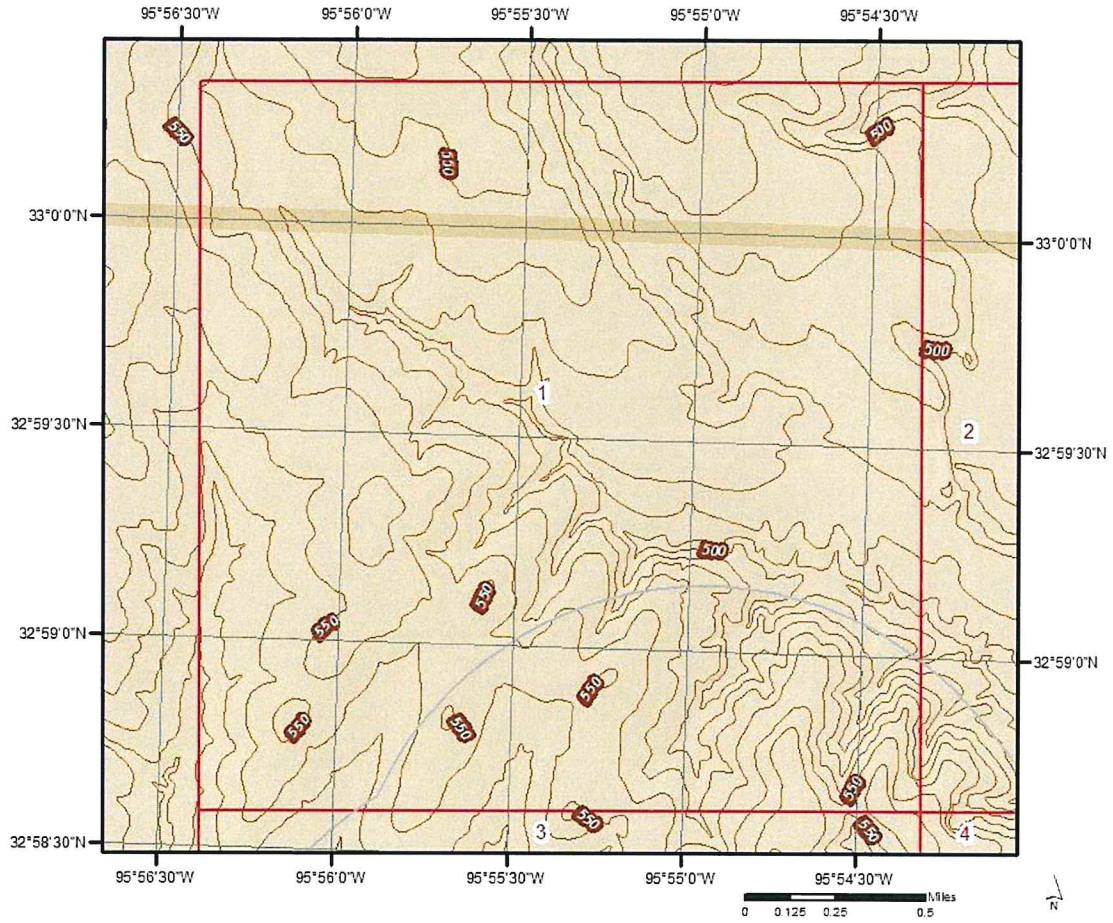
The previous topographic map(s) are created by seamlessly merging and cutting current USGS topographic data. Below are shaded relief map(s), derived from USGS elevation data to show surrounding topography in further detail.

Topographic information at project property:

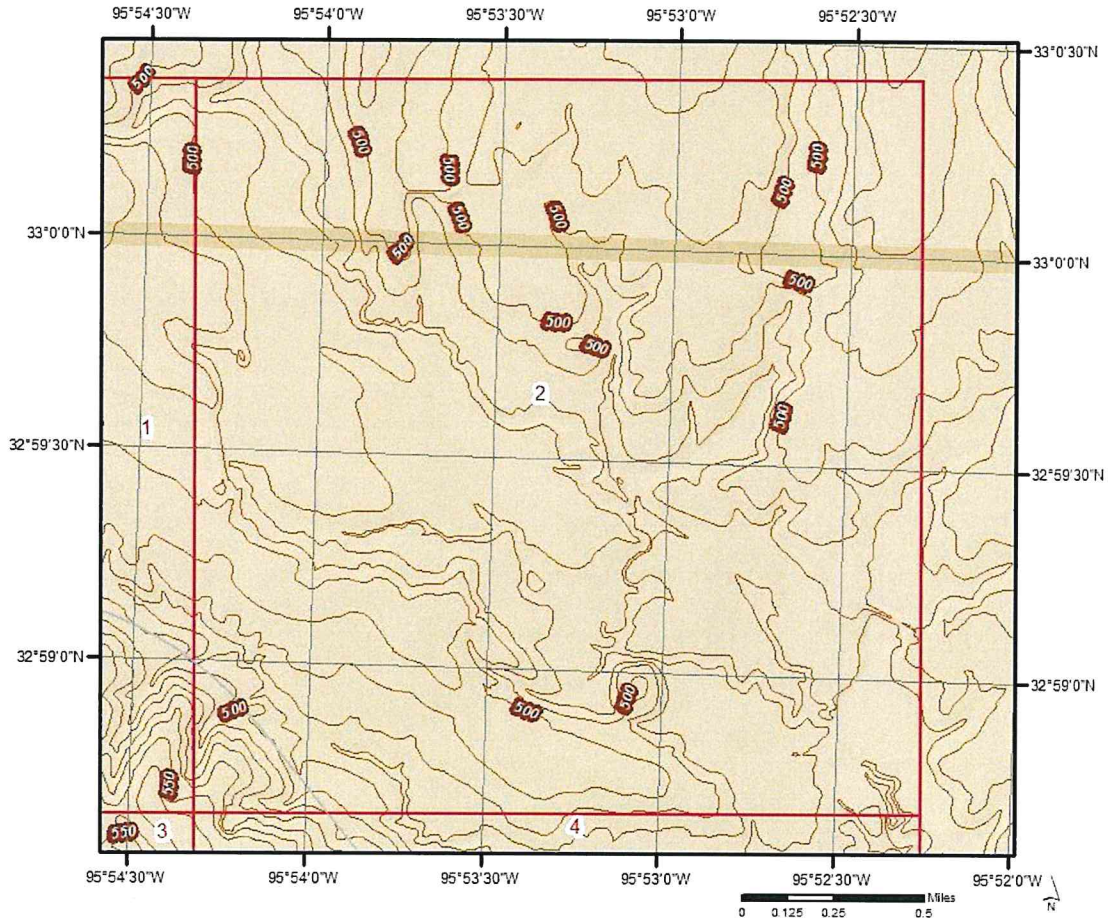
Elevation: 508.94 ft  
Slope Direction: NE



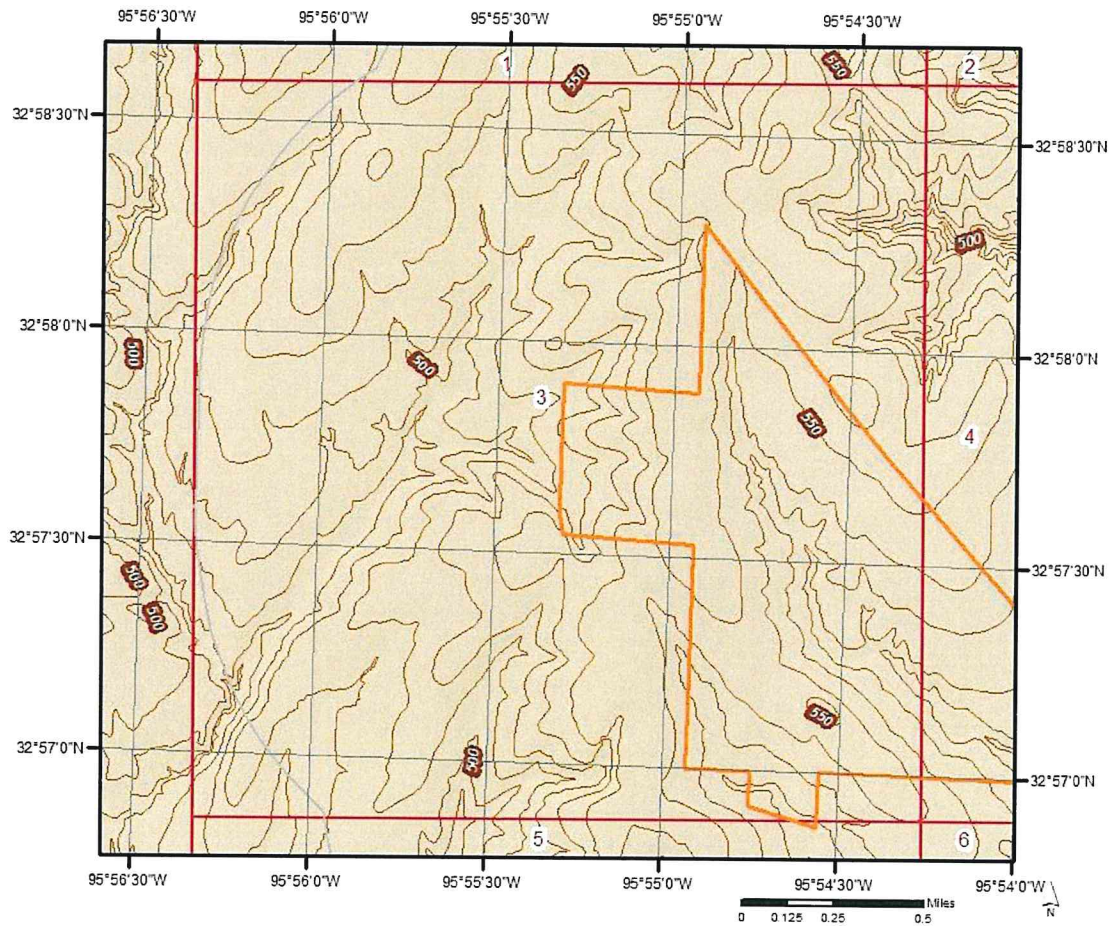
# Topographic Information



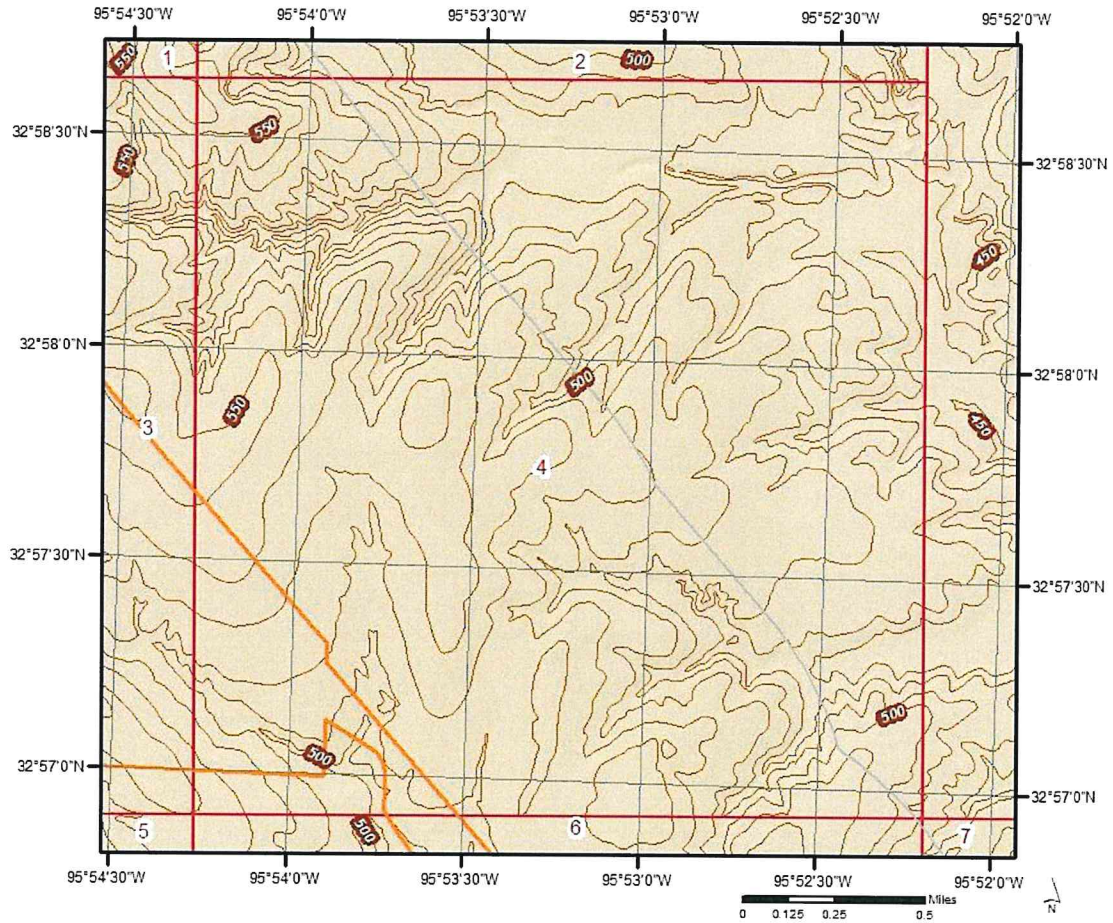
# Topographic Information



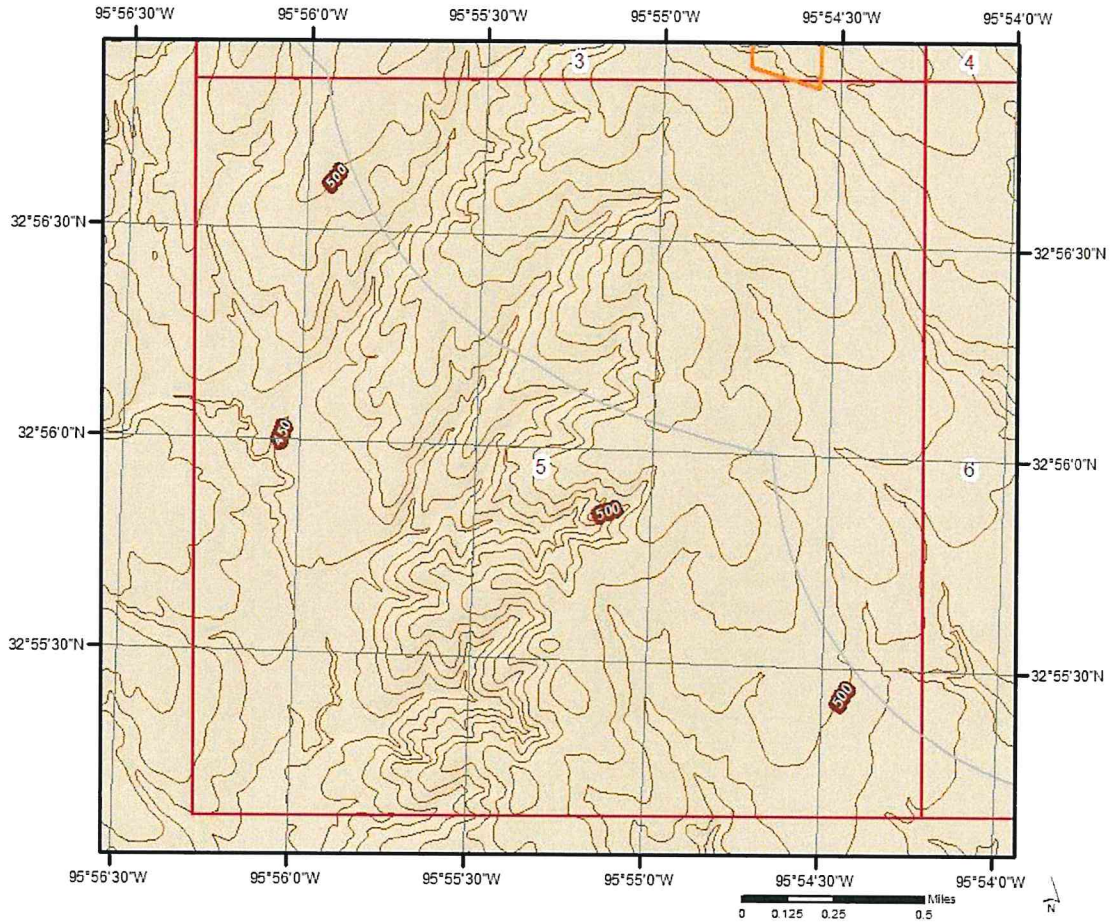
# Topographic Information



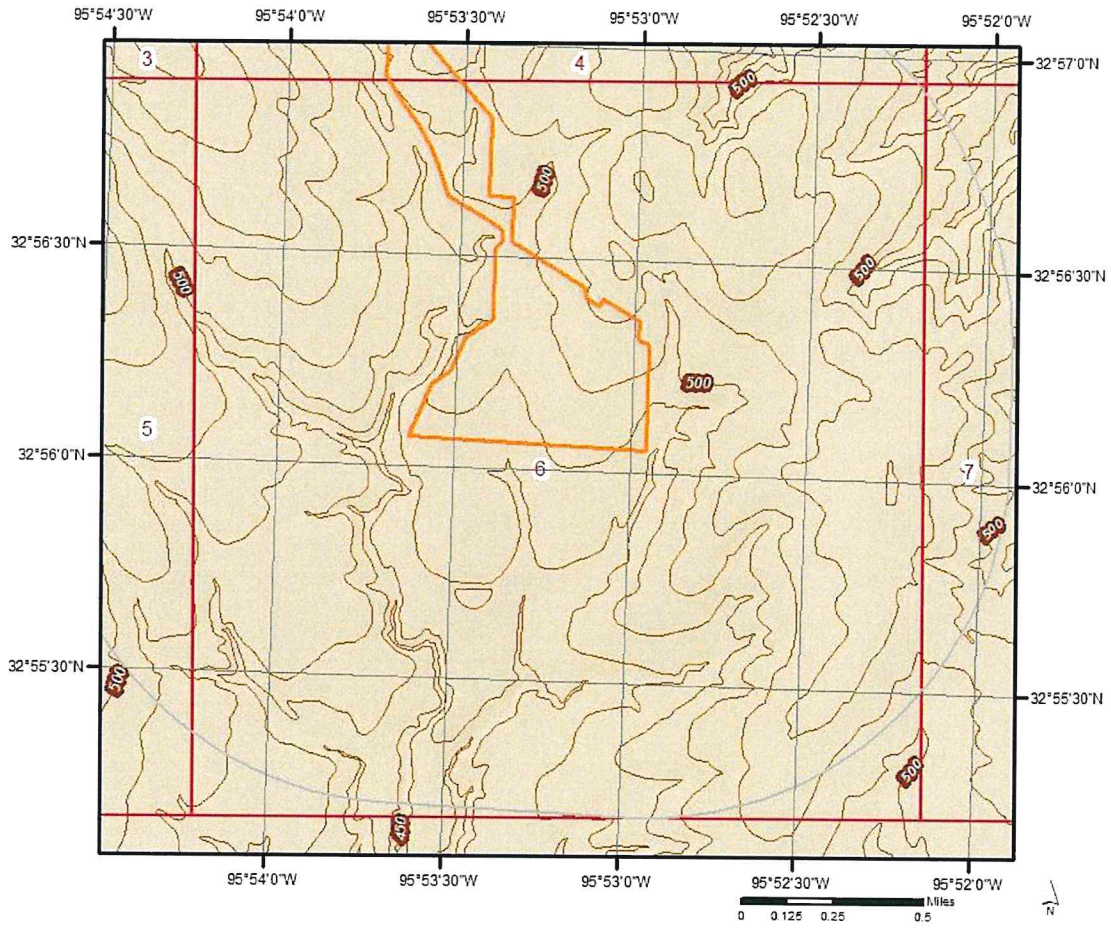
# Topographic Information



# Topographic Information



# Topographic Information



# Topographic Information

